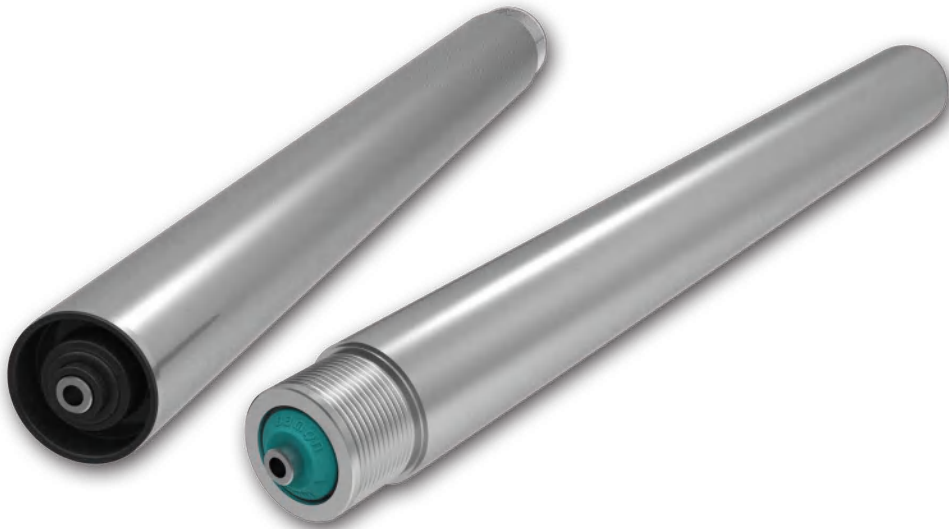


2890M Series Driven Conveyor Roller



2890M Series

Medium-duty Poly-vee Conveyor Roller

Product Features

- The steel poly-vee pulley is firmly welded on the steel tube. The maximum driving capacity for each zone can reach 300kg.
- The precision ball bearing is pressed tightly into the steel bearing housing for high load capacity.
- PJ type; 11 grooves with 2.34mm pitch.
- Different poly-vee belt series are for different roller center pitch (see the attached table).
- The steel poly-vee pulley roller is more adaptable than polymer ones.
- Temperature range: -5℃~ +40℃
- Humidity range: as low as 2% RH.

Please contact us if humidity out of this scope.

Specifications

Bearing Unit	
Bearing housing	Steel
Ground sleeve	Polyamide, black
Precision ball bearing	6001/6002

Drive Element	
Poly-vee pulley	Steel, decorative chromium plated

 Poly-vee belts are available.



## About Conveying Duty

1. Duty is the maximum conveying capacity of driven roller (it's not roller's maximum load capacity) For more information about the load capacity , refer to the load capacity of 1800 series dia 50 roller on Page 32.
2. In driven conveying, duty plays a decisive role.
3. The duty capacity for each unit can be as high as 300kg when the 5 groove poly-vee belt is used.

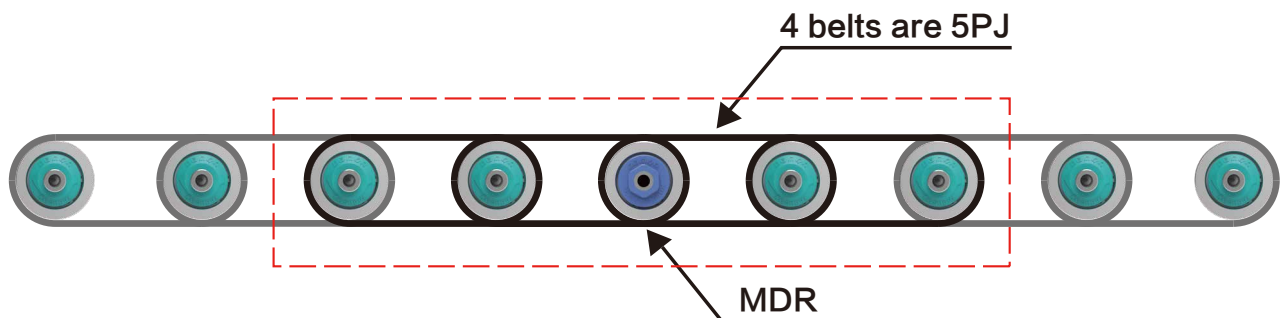
## Roller Center Pitch

Please refer to the following table for the regular pitch and the corresponding poly-vee belt series:

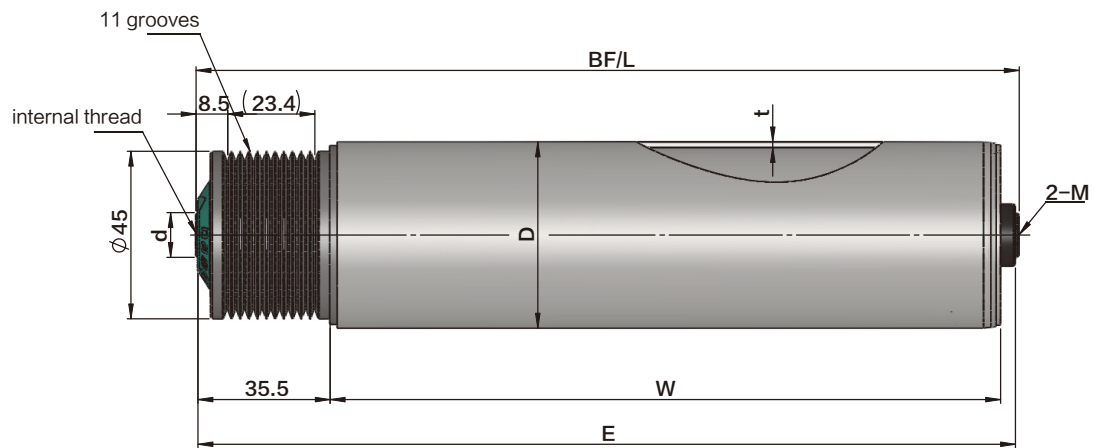
Center distance(mm)	Type of poly-vee belts	
60~62	4PJ256	5PJ256
73~75	4PJ286	5PJ286
87~91	4PJ314	5PJ314
97~101	4PJ336	5PJ336
119~121	4PJ376	5PJ376
123~128	4PJ388	5PJ388
144~151	4PJ435	5PJ435

⚙️ If you have other spacing requirements, please contact us.

## Solution Schematic Diagram



- ⚠️ 5PJ poly-vee belt must be applied to the four poly-vee belts near to the MDR or drive poly-vee pulley (2 belts separately on the left and right sides), and 4PJ can be applied to the rest belts.
- The overall performance will be better when 5PJ is applied to all belts (the Hutchinson brand is recommended).
- Each single MDR (middle drive) can drive no more than 14 pieces of poly-vee roller.



## 2890M Series Internal Thread

Tube Dia.(D)	Shaft Dia.(d)			
Φ50	Φ12	BF=W+41	E=W+39.5	L=W+41
	Φ15	BF=W+42	E=W+40.5	L=W+42

Tube	D*T	Shaft Dia.(d)	
		Φ14 ( M8 )	Φ15 ( M10x20 )
Steel, zinc plated	Φ50x1.5	2.890M.SH.C.ACC	2.890M.SH.C.ADC
Stainless steel (304)		2.890M.NH.C.ACC	2.890M.NH.C.ADC



stainless steel 304 tube with black bearing housing.  
Zinc plate steel tube with zinc plated steel bearing housing.